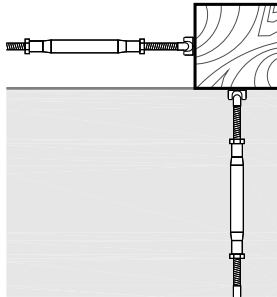


MAINTAIN 5'-0" MAX SPACING
BETWEEN POSTS TO MINIMIZE
CABLE DEFLECTION

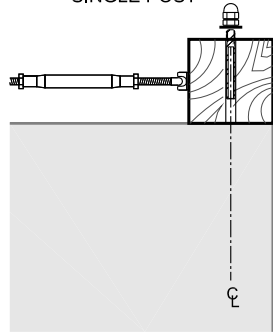
NOTE: BUILDING CODES VARY BY CITY & COUNTY. FOLLOWING THE INSTALLATION AND RAILING DESIGN INSTRUCTION AS DETAILED IN THIS DRAWING DOES NOT GUARANTEE CODE COMPLIANCE IN ALL AREAS. BEFORE STARTING THE PROJECT, CHECK WITH LOCAL REQUIREMENT FOR USING AND INSTALLING CABLE RAILINGS.

SINGLE POST



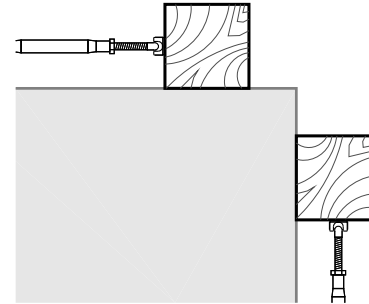
BOTH FITTING ATTACHED
TO FACE

SINGLE POST



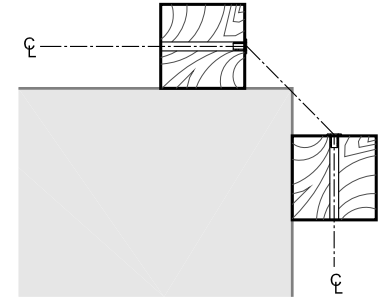
ONE FITTING ATTACHES
THROUGH POST AND OTHER
ATTACHES TO FACE

DOUBLE POST



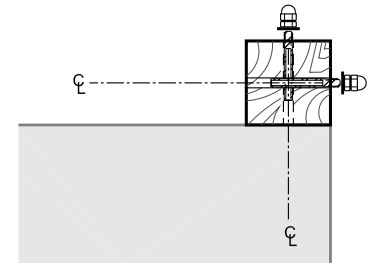
BOTH FITTINGS ATTACH
TO FACE

DOUBLE POST



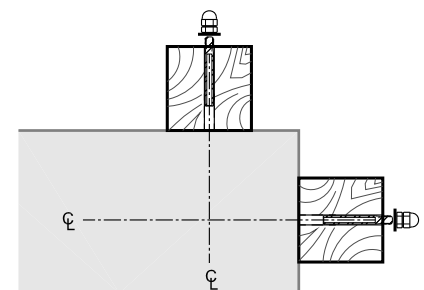
CABLE RUNS CONTINUOUSLY
THROUGH THE CORNER

SINGLE POST



BOTH FITTING ATTACHED
THROUGH POST. MUST OFFSET
DRILL HOLES BY AT LEAST 1/2"

SINGLE POST



BOTH FITTINGS ATTACH
THROUGH POST

DESIGN RECOMMENDATION: WOOD RAILING WITH CABLE INFILL



Vancouver Business Park
3315 NE 112th Ave 72/73
Vancouver Wa 98682
Phone/Fax: 1-888-686-7245 (RAIL)
web: www.stainlesscablerailing.com
sales:stainlesscablerailing.com